

EN Installation instructions TL100DE

Description

Wall vent designed for continuous ventilation of homes. The vent has condensation-protection and a filter. The air volume is regulated at the front cover which has a mechanism for changing the opening angle. The vent is installed in bedrooms, living rooms, etc. The recommended location is high on the wall, however, no closer than 10 cm to the ceiling (the top of the front cover - the ceiling). **Recommended location in THAILAND is DOWN on the wall 10 cm -30 cm from the floor.**

Installation

1. Making a hole

Make a $\varnothing 108$ mm hole through the wall with a slight angle outwards, approx. 1 mm/100 mm.

2. Installation of external part

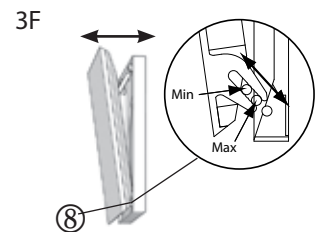
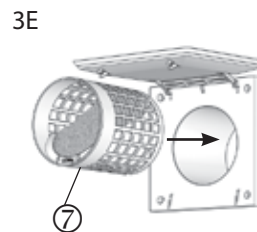
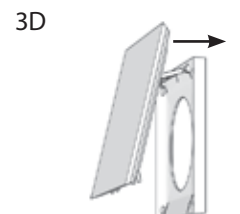
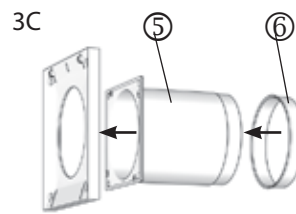
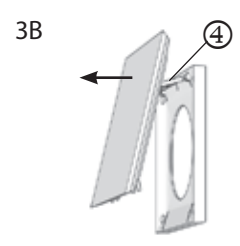
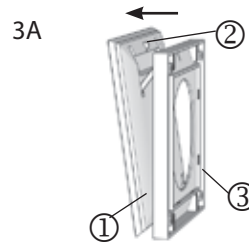
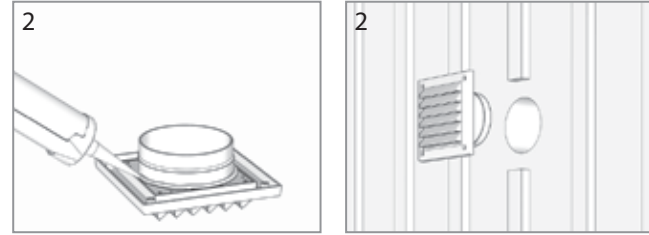
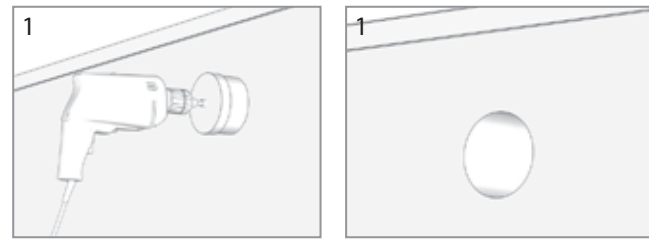
Press the short coupling securely to the external grille. Install a seal on the coupling. Cut the wall tube to the thickness of the wall. This may be 50 mm shorter if the vent coupling is telescopic. Apply the sealing compound to the rear of the grille/coupling. Insert the external grille with coupling and tube and screw the grille in place with four screws. Apply additional sealing compound if required (depending on type of facade). For areas exposed to the elements, replace the external grille with a Fresh Tyfon/storm cover or supplement the grille with a rain cover.

3. Installation of internal part.

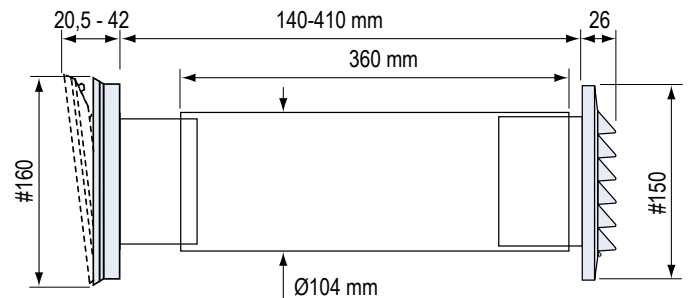
- A. Open the front cover [1] by first releasing the snap connection [2]. Pull the upper edge of the front cover out until the lower bracket loosens from the chassis [3].
- B. Loosen the front cover from the chassis by pulling the lever arm [4] from the chassis.
- C. Snap the coupling [5] securely to the rear of the vent, arrow upwards. Press the seal [6] securely on the coupling's tube side. Insert the vent into the wall pipe. Screw the chassis securely to the wall (arrow upwards) using four screws.
- D. Reinstall the front cover by snapping the lever arm securely in the chassis.
- E. Install filter cassette [7] with storm shield (certain models). This must be pushed in approx. 5 mm inside the chassis.
- F. Lower the front cover and fit the pivots [8] on the shafts in the chassis. Set the desired opening by selecting the position using the pivots.

Maintenance

In order to ensure good air quality and maintain the flow, the filter should be cleaned/replaced once or twice a year. Pull the top of the front cover until the pivots (the bottom of the front cover) release from the shafts in the chassis. Lift up the front cover and pull out the filter cassette. Remove the filter and clean it in a mild cleaning solution or replace it. The standard filter is washable, replace pollen filters. Reinstall, the filter cassette must be pressed in approx. 5 mm inside the chassis.



**Special size in THAILAND
100-220 mm
(If you need longer or shorter
contact VentPro)**



Call us :
+ 66 (0) 32 900 514
+ 66 (0) 9 3589 2442



ventprothailand



cs@ventprothailand.com



ventprothailand



ventprothailand.com

Fresh